

Chefs de chœur



Cassandra
mei - zingue



Josias
greis

Altos



Angélique
saund



Catherine K
sav'd



Catherine L
a e



Chantal
wretch



Clara
me !



Corinne M
saund



Corinne S
v'd



Dominique
a e



Emmanuelle
like



Fiammetta
me !



Géraldine
ay



Isabelle
was



Joëlle
lost,



Laura M
lost



Marie Ange
at



Maude
found,



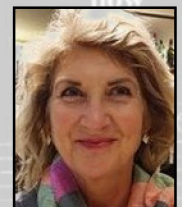
Michèle
was



Nicole F
but



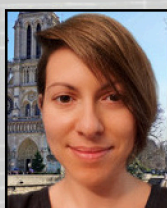
Nicole G
at



Pascale C
now,



Pauline
found,



Simona
was



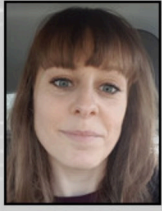
Sylvie
blind,



Viviane
now,



Sopranos



Anais



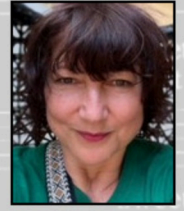
Aude



Catherine



Catherine S



Corine



Danielle



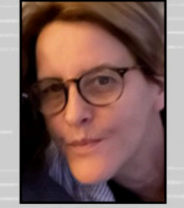
Dominique



Eléonore



Elise



Emmanuelle V



Jacqueline



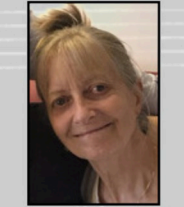
Marie Christine



Mireille



Monique IC



Monique P.M



Nadia



Nathalie



Nidia



Pascale B



Roumila



Sophie C



Sophie F



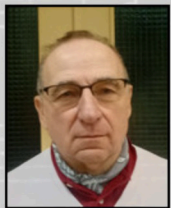
Véronique



Ténors et basses



Carole



Daniel



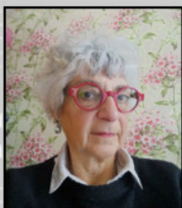
David



François



Jacques



Laure



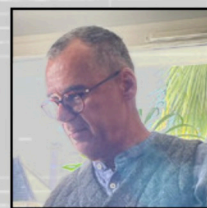
Lydie



Olivier



Sylviane



Thierry

10 I a - ay once wans was wa - a - as lost, lost but ba - at now naou I'm aym

11 I ay once wans was was lost lost but bat now naou I'm aym

12 I ay once wans was was lost lost but bat now naou I'm aym

13 found, faound was wa - as - blind, blaynd but ba - a - at now, naou I ay see. si

14 found, faound was was blind, blaynd but bat now, naou I ay see. si

15 found, faound was was blind, blaynd but bat now, naou I ay see. si

16 found, faound was was blind, blaynd but bat now, naou I ay see. si

